

1. Light should be oiled about every 6 months by putting several drops of S.A.E. #10 oil on the felt pad on the gear shaft and also oil the two motor bearings.
2. Clean lens, the glass dome, and the lamp with soft cleaning tissue. Do not use abrasive cleansers which will scratch the surfaces.
3. Lamp replacement use G.E. #1019 for 12 volt and G.E. #1015 for 6 volt.
4. Light must be level on roof and nameplate must be toward the front of vehicle.
5. As a precaution, a keyhole bracket (safety clip) is provided on bottom of light for use in addition to the magnets to hold the light to roof of car and to prevent slipping. Taped to bottom of base you will find a #4 self-tapping screw which should be set into the car roof to engage the keyhole bracket. To install this screw, swing keyhole bracket out in front of light, place light IN LEVEL POSITION on car roof, mark roof through the hole in bracket, and drill a small hole in roof with a #45 drill. Fasten screw into hole, leaving room for bracket to fit between screw head and roof.

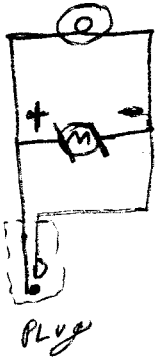
In placing light on the roof, the large hole in bracket is placed over the screw head, then slide the light back to engage the small end of keyhole under the screw head.

Where roof of car has a groove, follow same procedure except (before drilling) place light just a little towards either front door, so the keyhole bracket and rear magnet will be along side of the groove instead of over the groove.



Be sure to use keyhole clip and anchor screw in roof as manufacturers warranty does not apply to damage from impact or fall.

6. The Jr. Beacon Ray is provided with cable and a plug to be inserted into cigar lighter receptacle. In placing light on roof be careful that cable does not interfere with magnets holding light to roof.
7. Check bottom of magnets regularly to make sure they are moving freely and free from dirt or metal shavings.



SCHEMATIC
DIAGRAM

	FIRST USED ON	MATERIAL	FEDERAL SIGN AND SIGNAL CORPORATION 8700 SOUTH STATE STREET CHICAGO 19, ILL.		
		SIZE			
		FINISH	DR. <u>GB</u> <u>2-25-58</u>	CH. <u>7.E.</u>	SCALE <u>CFL</u>
TOLERANCE UNLESS OTHERWISE SPECIFIED FRACTIONAL $\pm 1/64$ DECIMAL $\pm .005$	NAME * 15	GENERAL INSTRUCTIONS - MAGNET MOUNT JR. BEACON RAY LIGHT		8441 B 46	

7.E.
APPD.