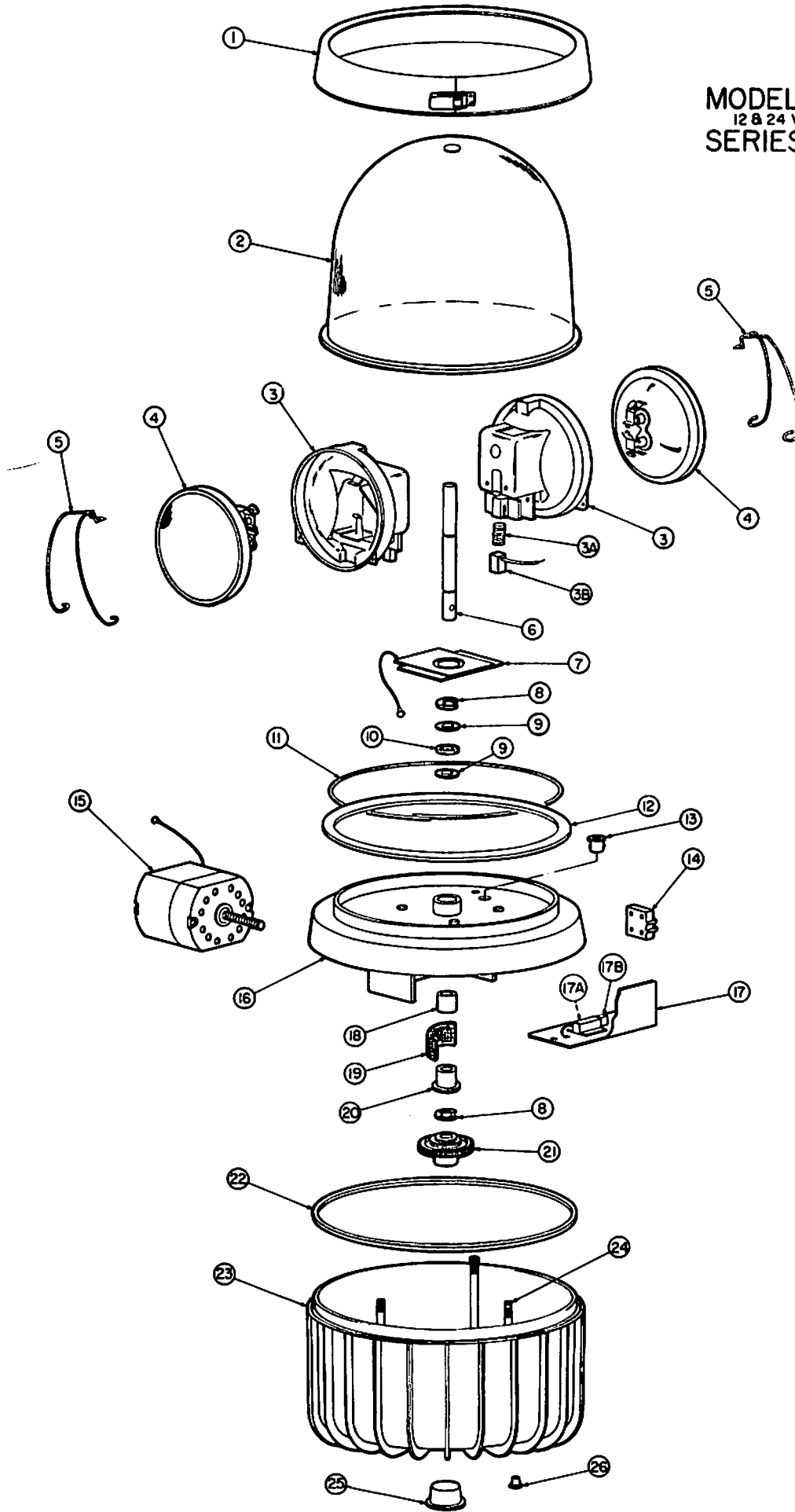


TITAN

MODEL 312
12 & 24 VDC
SERIES A1



MODEL 312
12 & 24 VDC
SERIES A1

Index No.	Description	Part No.	Qty.
1	Retaining Band Assy.	8449C017	1
2	Dome, Red Acrylic	8449C005-01	1AR
	Dome, Amber Acrylic	8449C005-04	
	Dome, Clear Acrylic	8449C005-05	
	Dome, Blue Acrylic	8449C005-02	
	Dome, Red Plastic	8449C005-11	
	Dome, Blue Plastic	8449C005-12	
	Dome, Amber Plastic	8449C005-14	
	Dome, Clear Plastic	8449C005-15	
	Split Dome, Blue and Clear	8449C048-01	
	Split Dome, Amber and Red	8449C048-02	
	Split Dome, Red and Blue	8449C048-03	
	Split Dome, Amber and Blue	8449C048-04	
	Split Dome, Red and Clear	8449C048-05	
	Split Dome, Amber and Clear	8449C048-06	
3	Lamp Holder Assy. (includes items 3A and 3B)	8422B019	2
3A	Spring	8240A032	2
3B	Brush	8240A031-01	2
4	Lamp, 6V, 60W	8107A032	2AR
	Lamp, 12V, 60W	8107A066	
	Lamp, 24V, 50W	8107A027	
5	Lamp Clamp Wire	8422B016	2
6	Shaft	8449A026	1
7	Collector Ring Assy.	8449A012	1
8	Retaining Ring	8422A010	2
9	Thrust Washer	8449A021	2
10	Thrust Retainer	8449A022	1
11	Spacer Ring (Plastic Dome Only)	8449A040	1AR
12	Dome Gasket	8449C006-02	1
13	Snap Bushing	8449A010	1
14	Terminal Block	8253A119	1
15	Motor, 6V	8422B111-04	1AR
	Motor, 12V	8422B111-05	
	Motor, 24V	8422B111-06	
	Motor, 64V to 75V	8422B111-10	
16	Base Plate	8449D003-01	1
17	Gear Box Cover and Brush Holder (includes items 17A and 17B)	8449A020	1
17A	Spring	8240A032	1
17B	Brush	8240A031	1
18	Sleeve Bearing	8240A034-01	1
19	Felt Oil Pad	8449A011	1
20	Flange Bearing	8449A013	1
21	Worm Gear Clutch Assy.	8449A025	1
22	Gasket	8449C007	1
23	Housing	8449D002	1
24	Stud	7009A007-79	3
25	Plug, Tapered	8449A016	1
26	Plug, Tubing	8449A014	3
Not Shown	Shock Mounting Conversion Kit	8459A079	AR

Lamp, 75.V

8107A055